

newzealand.govt.nz

We're protecting the

ROSS SEA REGION

Home to **32%** of the world's Adélie penguins



26% of emperor penguins



11 bird species



30% of Antarctic petrels



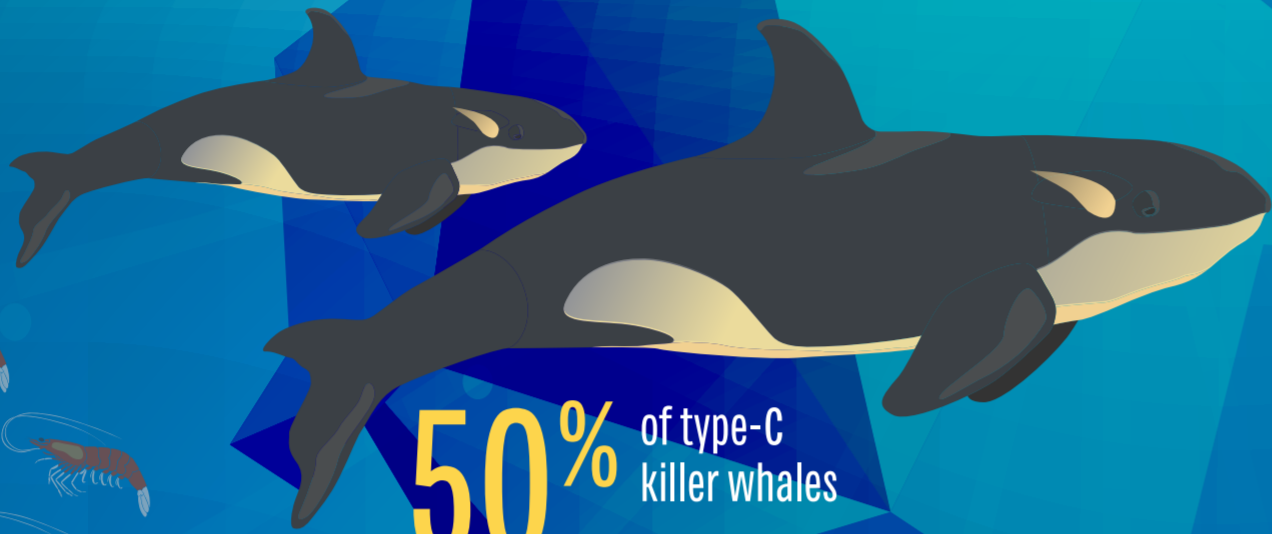
All **25** *CCAMLR members support protecting the Ross Sea

The *MPA is **1.55** million km²

6+ species of krill



50% of type-C killer whales



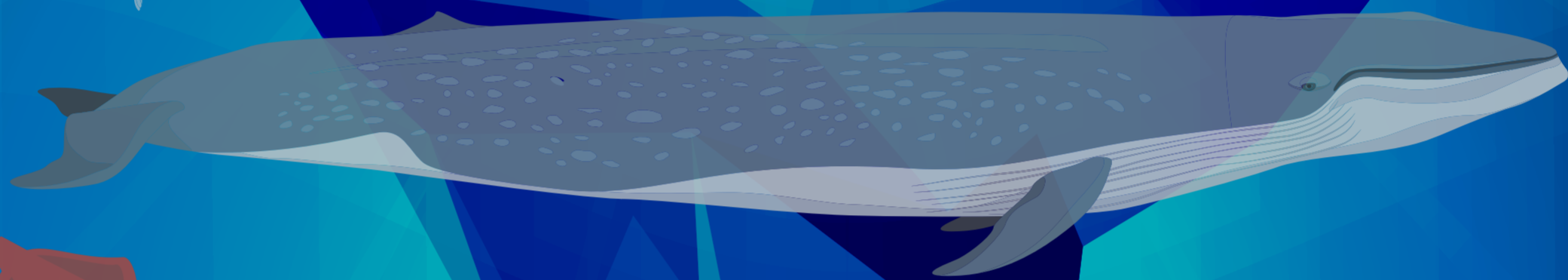
5 seal species



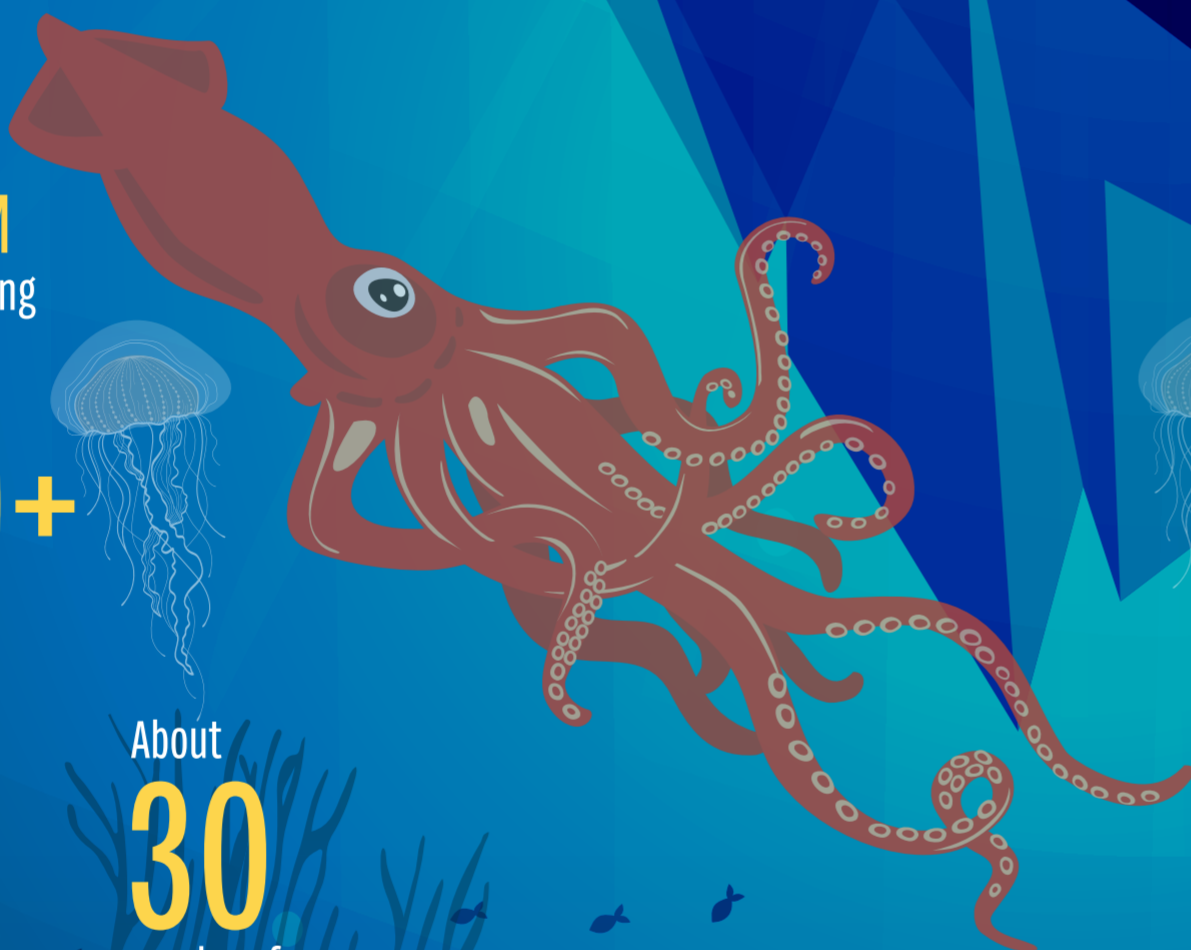
95+ fish species



12 whale species

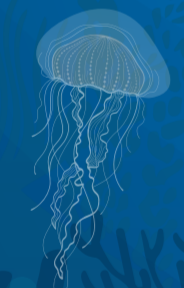


Colossal squid up to **14M** long



2,000+ invertebrate species

About **30** species of seaweed

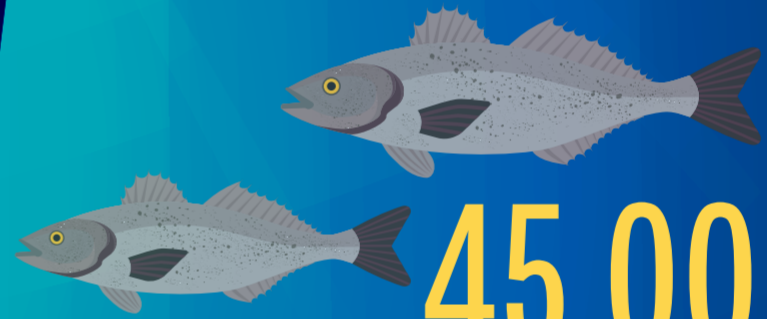


30CM sea spiders

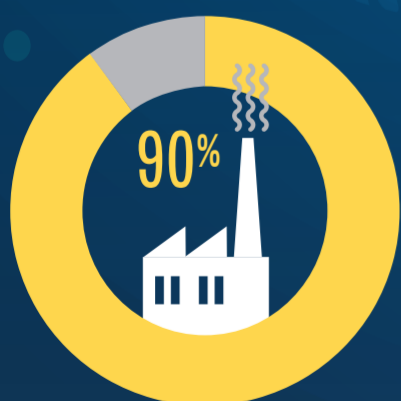
Starfish with **50** arms

230+ species of sponge

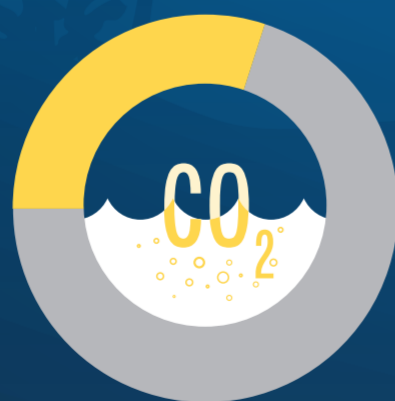
45,000+ Antarctic toothfish tagged and released for research



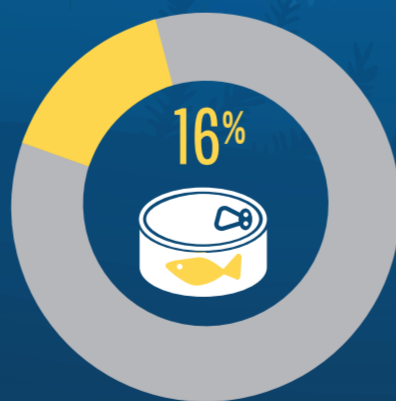
Our oceans matter



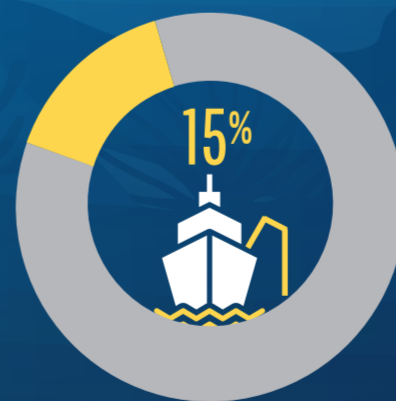
They absorb **90%** of excess heat generated by greenhouse gases



They absorb **30%** of CO₂ generated by humans



They provide **16%** of the animal protein we eat

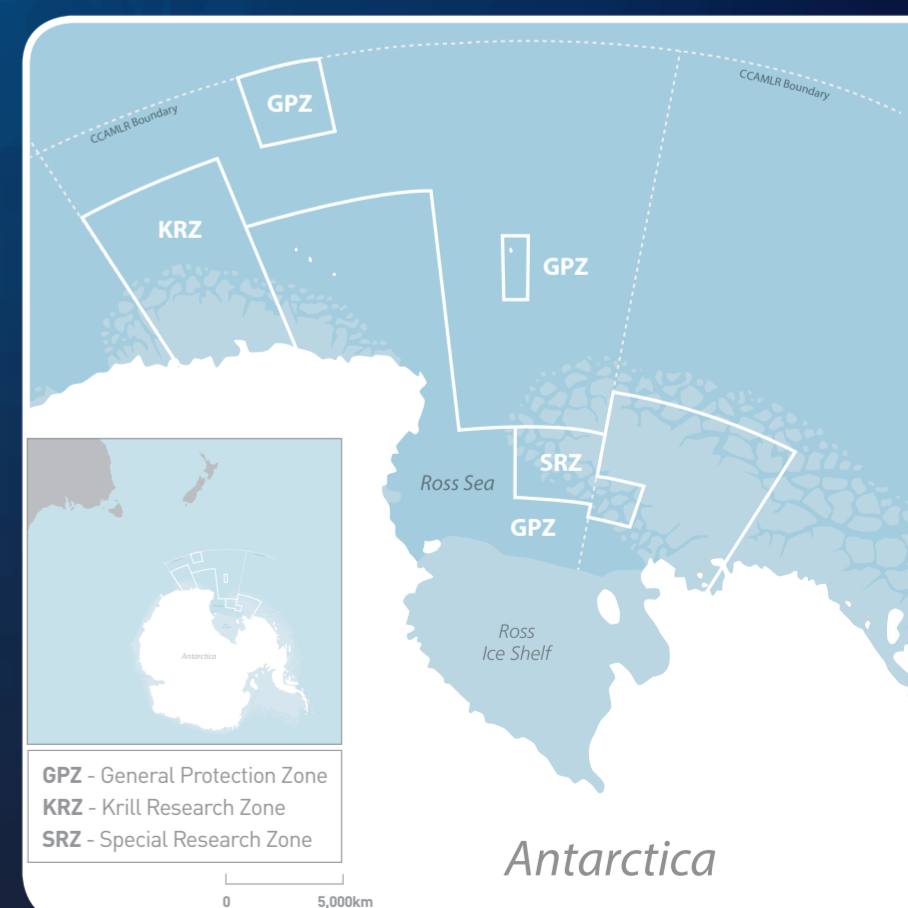


15% of global catch is taken by illegal, unreported and unregulated fishing

Timeline



Ross Sea *MPA on the map



*CCAMLR = Commission for the Conservation of Antarctic Marine Living Resources
*MPA = Marine Protected Area